

dépendance

4 rue du marché aux porcs
1000 brussels
t +32 2 217 74 00
www. dependance.be
info@dependance.be

ASTA LYNGE - CAMILLA WILLS
VOLUNTEER
6 March – 10 April, 2021

Press Release

Are we really sure
Can a love that lasted for so long still endure?
Do I, really care? Hey, hey
Let's talk about the distractions goin' on elsewhere

I keep hearin' footsteps baby
In the dark, in the dark
Why? I keep hearin' footsteps baby
In the dark, in the dark

My mind drifts now and then
Lookin' down dark corridors and wonders what might have been
Something's up ahead
Hey, should I keep this same direction or go back instead?

I, I keep hearin' footsteps baby
In the dark, in the dark
Why? I keep hearin' footsteps baby
In the dark, in the dark

Honey, now lets stop walkin' around
When there's love lost to be found
And you know I still care, I still care
What's the sense in goin' elsewhere?

Who feels really sure?
Can that feelin' guarantee your happiness shall endure?
And do we, really care? Hey, hey
Let's look at what's been happenin' and try to be more aware

I, I keep hearin' footsteps baby
In the dark, in the dark
Why? I keep hearin' footsteps baby
In the dark, in the dark

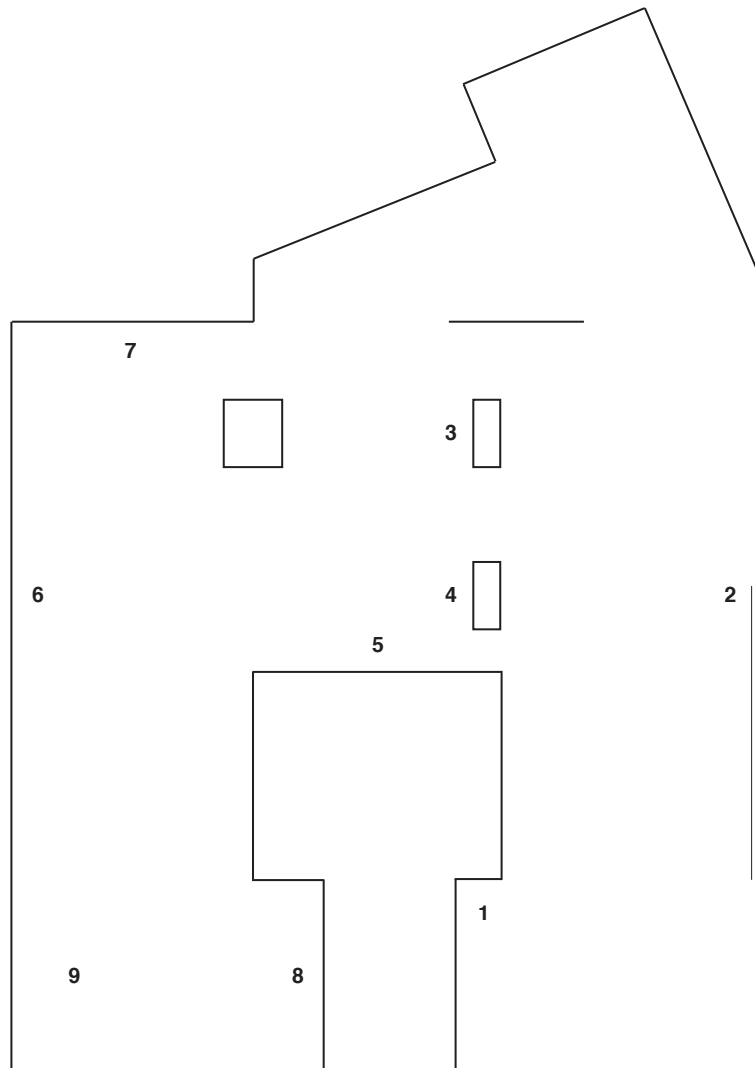
Yeah, lets stop walkin' around
Well when there's love lost, lost to be found
Honey, you know I still care, I still care
What's the sense in goin', goin' elsewhere?

Honey, lets stop walkin' around and around and around
When there's no love to be found
Baby, you know, I still care, I still care
What's the sense of goin', goin' elsewhere?

- The Isley Brothers, *Footsteps in the Dark, Parts 1 & 2*

Asta Lyng (b. 1988, Copenhagen) works associatively across media, materials and processes. She is interested in the notion of progress and its inherent affiliation with technology. She was part of the CSM Associate Studio Programme (2013 - 16). Recent exhibitions include dépendance, Brussels (2021), Le Bourgeois, London (2019), Vermilion Sands, Copenhagen (2019, 2018) and Musée D'Élysée, Lausanne (2020).

Camilla Wills is an artist and publisher from the UK. She has exhibited artwork at dépendance, Brussels (2021), Manifesta 13, Marseille (2020), Kantine, Brussels (2020), Camden Arts Centre, London (2019), Une une une, Perpignan (2019), Gaudel de Stampa, Paris (2018) and Montague, London (2017).



- | | | | |
|---|--|---|--|
| 1 | <p>Asta Lynge
Escape, 2021
recast float glass
12 x 17.5 x 24.5 cm / 4.72 x 6.89 x 9.65 in</p> | 6 | <p>Camilla Wills
Anti-imperial Monochrome, 2021
Royal British Legion poppy wreath,
signal grey paint
50 x 50 x 32 cm / 19.69 x 19.69 x 12.60 in</p> |
| 2 | <p>Camilla Wills
Anti-imperial Monochromes, 2021
Five Royal British Legion poppy wreaths,
signal grey paint
40 x 40 x 32 cm / 15.75 x 15.75 x 12.60 in</p> | 7 | <p>Camilla Wills
Reproduction, 2021
pharmaceutical pigments on canvas,
wooden frame
177 x 137 cm / 69.69 x 53.94 in</p> |
| 3 | <p>Asta Lynge
World, 2021
4K video, silent, 5:38</p> | 8 | <p>Asta Lynge, Escape, 2021
recast float glass
17.5 x 14 x 25 cm / 6.89 x 5.51 x 9.84 in</p> |
| 4 | <p>Asta Lynge
How soft your fields so green,
can whisper tales of gore, 2021
4K 360° video with sound, 6:15</p> | 9 | <p>Asta Lynge & Camilla Wills,
Hey, should I keep this same direction or go
back instead?, 2021
leather jacket, tube, unpicked studs
270 x 13 x 13 cm / 106.3 x 5.12 x 5.12 in</p> |
| 5 | <p>Camilla Wills
A life, 2021
photoprint
192.5 x 131.5 x 6.5 cm / 75.79 x 51.77 x 2.56 in
image: © Marie Colvin photographed by Don McCullin 2005</p> | | |